

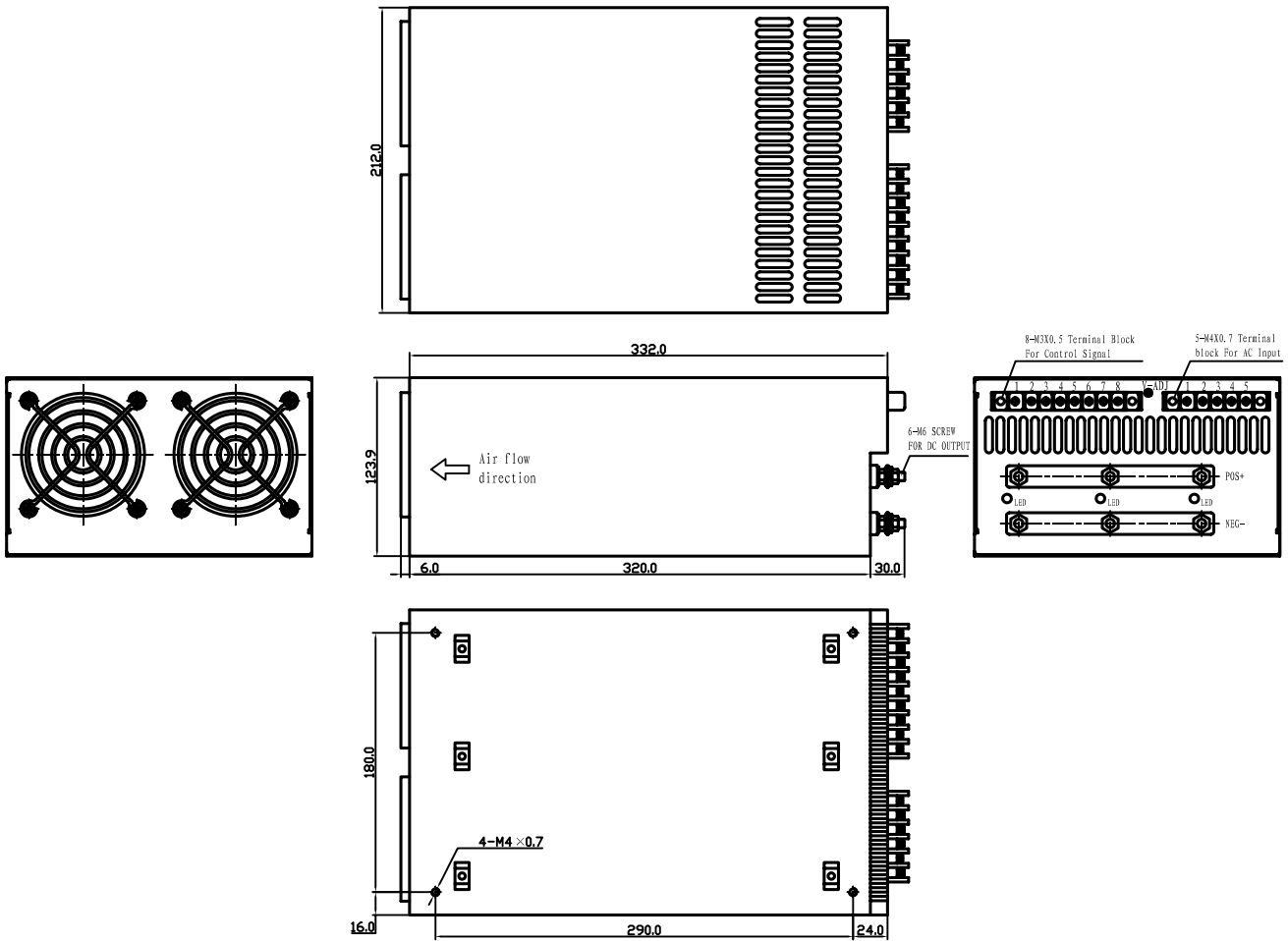
**Features:**

- AC input 180~260VAC, 3Φ3 wire
- AC 220V, 1Φ or 380V, 3Φ4 wire (Option)
- PF>0.98 @ 230VAC • Protections: Short circuit/ Over load/ Over voltage/ Over temperature
- Built-in remote ON-OFF control and remote sense function
- With good signal
- With parallel function (N+1)
- Can adjust from 20%~100% output voltage by external control 1-5V
- Forced air cooling by built-in DC fan
- 3 years warranty      Dimension: 350\*212\*124mm(L\*W\*H)



MODEL		HSCP-2K4-9	HSCP-2K4-12	HSCP-2K4-15	HSCP-2K4-18	HSCP-2K4-24	HSCP-2K4-36	HSCP-2K4-48	HSCP-2K4-60	
OUTPUT	DC VOLTAGE	9V	12V	15V	18V	24V	36V	48V	60V	
	VOLTAGE TOLERANCE	±2.0%	±1.0%	±1.0%	±1.0%	±1.0%	±1.0%	±1.0%	±1.0%	
	RATED CURRENT	266A	200A	160A	133A	100A	66A	50A	40A	
	CURRENT RANGE	0~266A	0~200A	0~160A	0~133A	0~100A	0~66A	0~50A	0~40A	
	RATED POWER	2400W	2400W	2400W	2400W	2400W	2400W	2400W	2400W	
	RIPPLE & NOISE	90mVp-p	120mVp-p	150mVp-p	150mVp-p	150mVp-p	200mVp-p	200mVp-p	200mVp-p	
	DC ADJUSTMENT RANGE	Can adjust from 20%~100% output voltage by external control 1-5V								
	SETUP, RISE, HOLD TIME	800ms, 400ms, 12ms at full load								
INPUT	VOLTAGE RANGE	180~260VAC 3Φ4 wire, 47~63 Hz								
	AC CURRENT	15A/ 230 VAC								
	EFFICIENCY	83%	84%	85%	86%	88%	88%	89%	89%	
	INRUSH CURRENT	60A/230V								
	LEAKAGE CURRENT	3.5 mA/240VAC								
PROTECTION	OVER LOAD	110%~140% Protection type: Current limiting, delay shut down o/p voltage, re-power on to recover								
	OVER VOLTAGE	110%~135% Protection type: Shut down o/p voltage, re-power on to recover								
	OVER TEMP.	TSW1 ( Power transistor) When Temp.>100 °C, shut down o/p voltage, Temp.<100 °C, O/I auto -recovery.								
ENVIRONMENT	WORKING TEMP., HUMIDITY	-20°C~+65°C, 20%~90 %RH								
	STORAGE TEMP., HUMIDITY	-20°C~+85°C, 10%~95 %RH								
	VIBRATION	10~200Hz, 2G 10min./1cycle, period for 60min, each along X, Y, Z axes								
SAFETY	WITHSTAND VOLTAGE	I/P-O/P:3KVAC			I/P-FG:1.5KVAC		O/P-FG:0.5KVAC			
	ISOLATION RESISTANCE	I/P-O/P, I/P-FG, O/P-FG :100M Ohms / 500VDC								
STANDARD	SAFETY STANDARD	Design refer to UL60950,TUV EN60950 Approved								
	EMC STANDARD	Design refer to EN55022,EN61000-3-2,3, EN61000-4-2,3,4,5,6,8,11								
OTHERS	WEIGHT	9.0Kg;								
	PACKING	1pcs/10kg/CARTON								
NOTE	<ol style="list-style-type: none"> <li>1. All parameters NOT specially mentioned are measured at 230VAC input, rated load and 25°C of ambient temperature.</li> <li>2. Ripple &amp; noise are measured at 20MHz of bandwidth by using a 12" twisted pair-wire terminated with a 0.1 μ &amp; 47 μ parallel capacitor.</li> <li>3. Tolerance: includes set up tolerance, line regulation and load regulation.</li> <li>4. Current limiting 3 times(1.5s,3.0s,5.0s)Then intelligent auto recovery before shut down</li> <li>5. The power supply is considered a component which will be installed into a final equipment. The final equipment must be re-confirmed that it still meets EMC directives.</li> </ol>									

■ Outline and Dimension:



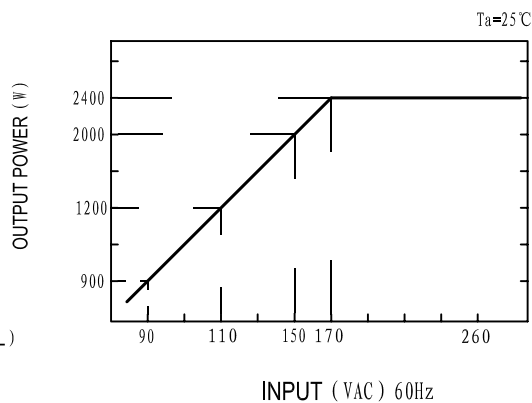
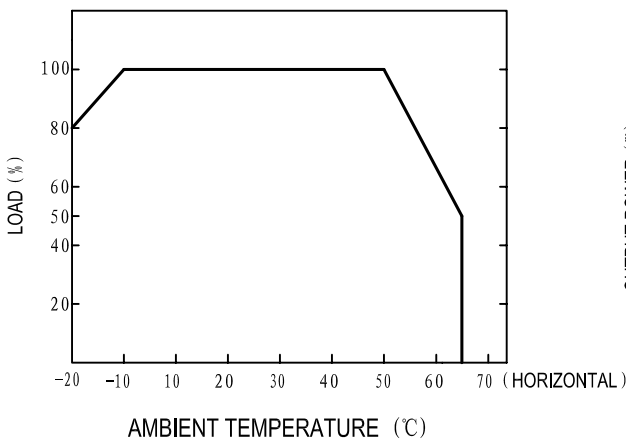
Control Terminal Pin No. Assignment:

Pin No.	Assignment	Pin No.	Assignment
1	VS+	5	PG
2	VS-	6	PAR
3	VCI	7	GND
4	VCO	8	INH

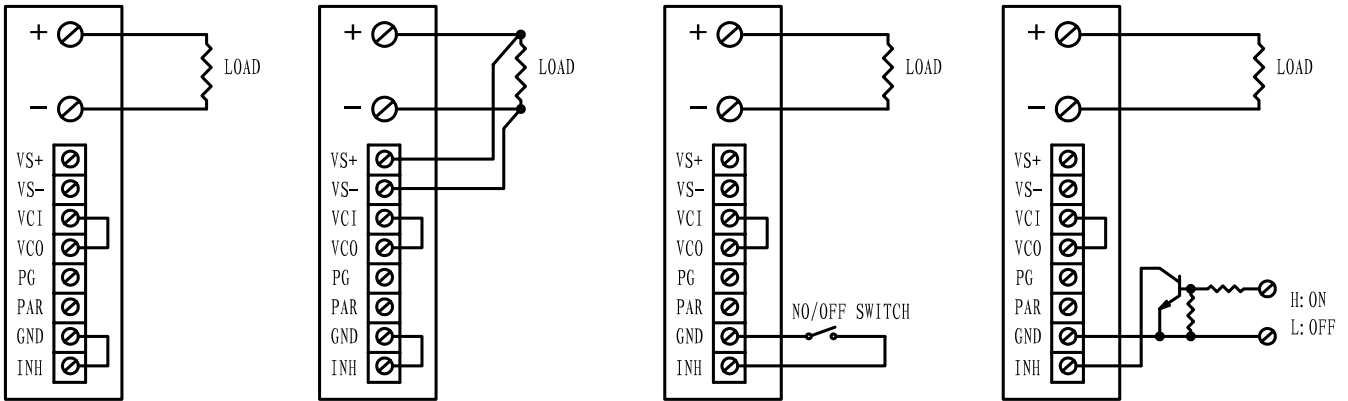
AC Input Terminal No. Assignment:

Pin No.	Assignment	Pin No.	Assignment
1	FG ⚡	4	S
2	N	5	R
3	T		

■ Derating Curve



■ Control Terminal Instruction Manual:



USING INTERNAL VOLTAGE CONTROL

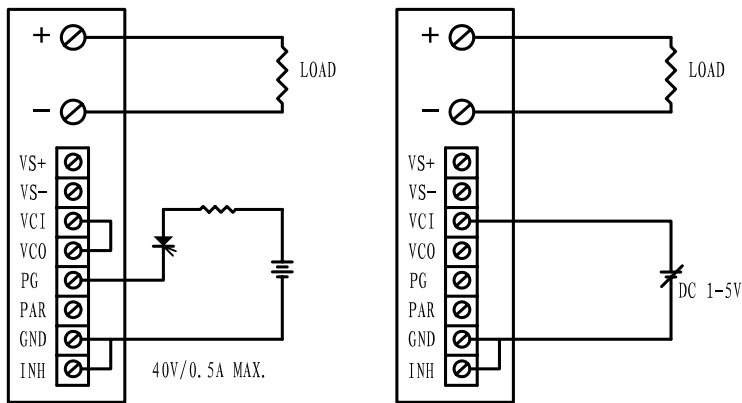
REMOTE SENSING

ON/OFF CONTROL BY SWITCH

ON/OFF CONTROL BY TRANSISTOR

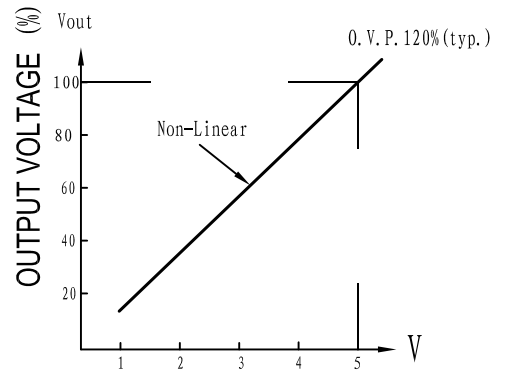
GOOD: LED OFF

FAIL: LED ON

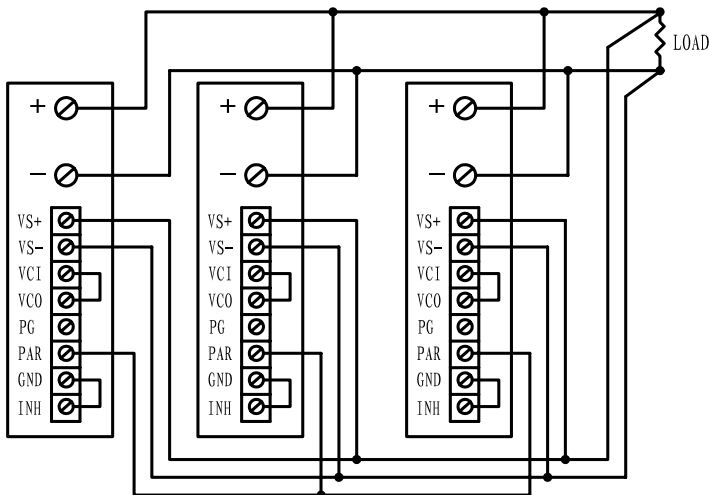


POWER NORMAL SIGNAL

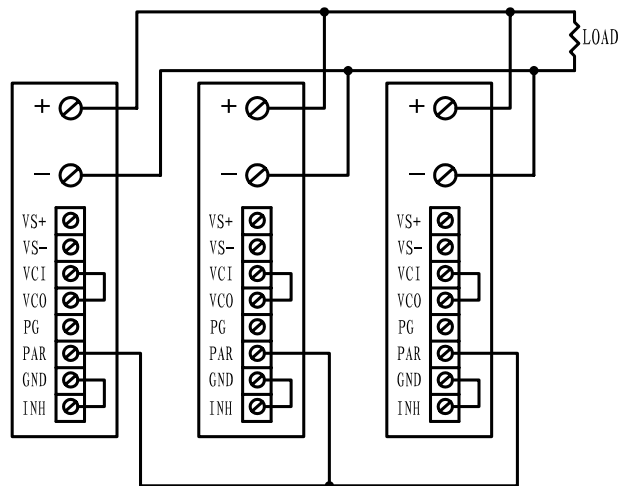
OUTPUT VOLTAGE ADJUST WITH DC1-5V



EXTERNAL VOLTAGE (DC)

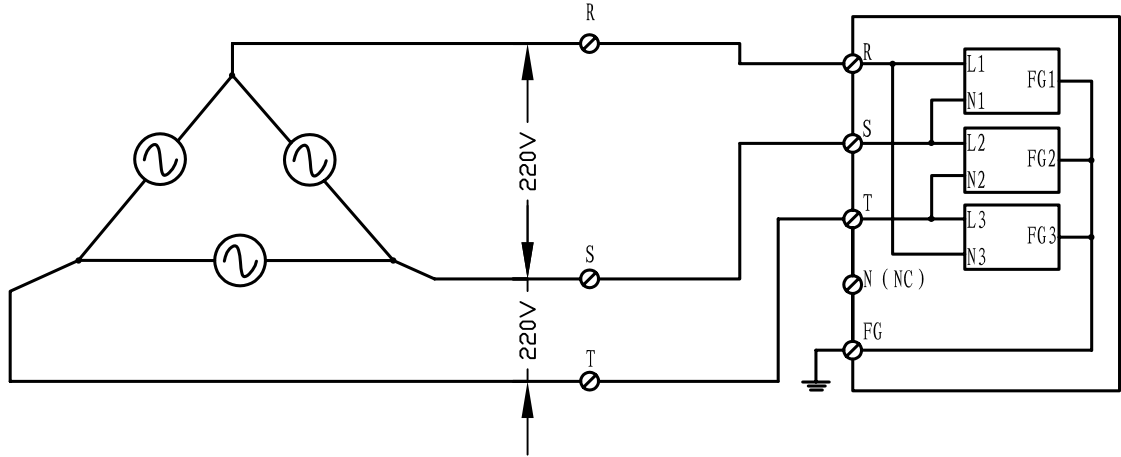


PARALLEL OPERATION WITH REMOTE SENSING

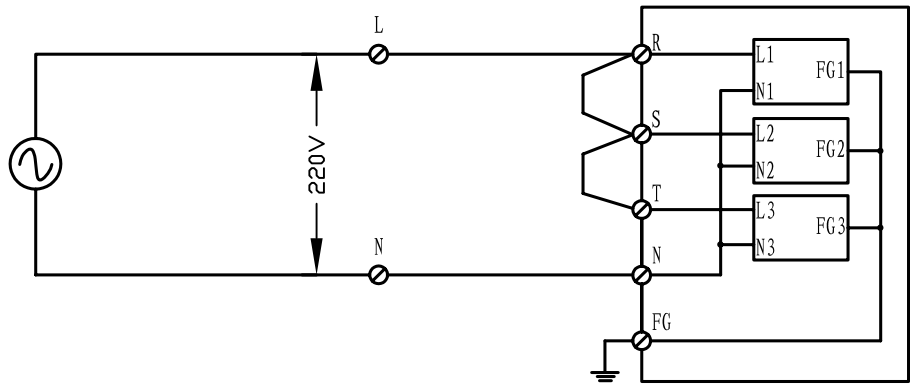


PARALLEL OPERATION WITHOUT REMOTE SENSING

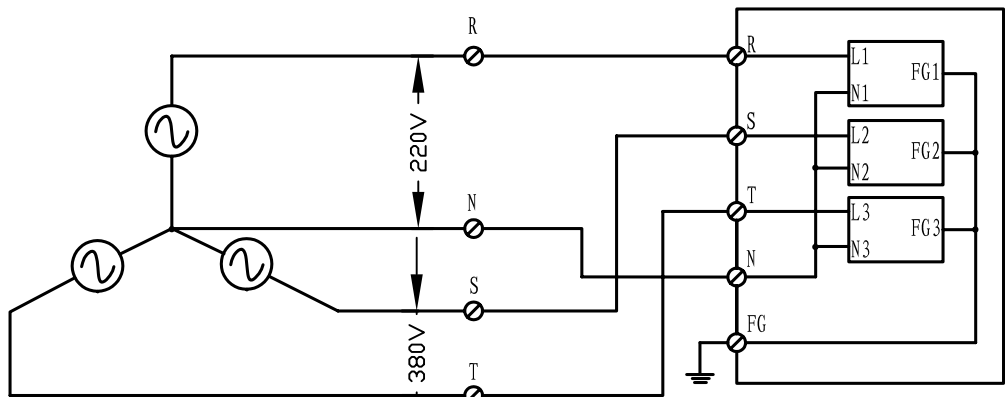
■ FIG.A: 3φ 3W 220VAC SYSTEM ( STANDARD MODEL FOR STOCK )



■ FIG.B: 1φ 220VAC SYSTEM



■ FIG.C: 3φ 4W 220/380VAC SYSTEM



■ FIG.D: 3φ 4W 190/110VAC SYSTEM

