

Features:

- High efficiency, high reliability, low cost
- Protections: Short circuit / Over load
- Cooling by free air convection
- LED indicator for power on
- Fixed switching frequency >66KHz
- 1 year warranty
- Dimensions: 99*97*36mm(L*W*H)

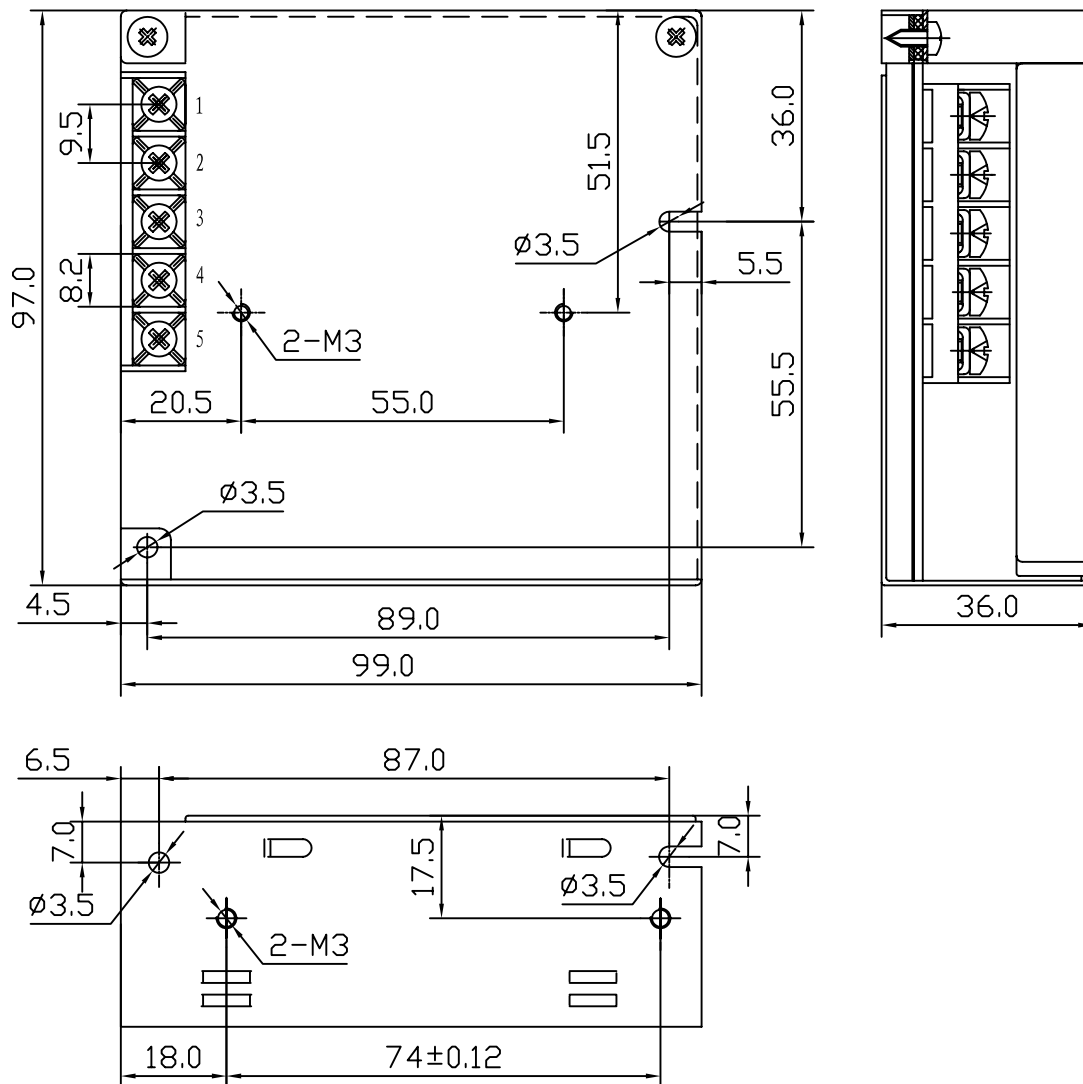


MODEL		HSM-50-12	HSM-50-15	HSM-50-24
OUTPUT	DC VOLTAGE	12V	15V	24V
	VOLTAGE TOLERANCE	±1%	±1%	±1%
	RATED CURRENT	4.2A	3.4A	2.1A
	CURRENT RANGE	0-4.2A	0-3.4A	0-2.1A
	RATED POWER	50.4W	51W	50.4W
	RIPPLE & NOISE	120mVp-p	120mVp-p	200mVp-p
	DC ADJUSTMENT RANGE	±10%	±10%	±10%
	SETUP, RISE, HOLD TIME	200ms,100ms,20ms at full load		
INPUT	VOLTAGE RANGE	AC 170~264VAC 47~63 Hz; DC 240~370VDC		
	AC CURRENT	0.65A/ 230 V		
	EFFICIENCY	82%	82%	84%
	INRUSH CURRENT	Cold start: 36A/230V		
	LEAKAGE CURRENT	<1 mA/240VAC		
PROTECTION	OVER LOAD	110% ~ 160% Constant current limiting, recovers automatically after fault condition is removed		
ENVIRONMENT	WORKING TEMP., HUMIDITY	-10°C ~ +60°C; 20% ~ 90 %RH (Refer to output load derating curve)		
	STORAGE TEMP., HUMIDITY	-20°C ~ +85°C; 10% ~ 95 %RH		
	VIBRATION	10~500Hz, 2G 10min./1cycle, period for 60 min, each along X, Y, Z axes		
SAFETY	WITHSTAND VOLTAGE	I/P-O/P: 2KVAC I/P-FG: 1.5KVAC O/P-FG: 0.5KVAC		
	ISOLATION RESISTANCE	I/P-O/P, I/P-FG, O/P-FG: 100M Ohms/500VDC		
STANDARD	SAFETY STANDARD	Design refer to UL1012		
	EMC STANDARD	EN55022 CLASS A		
OTHERS	WEIGHT	0.33Kg		
	PACKING	45pcs/16Kg/0.9CUFT		

NOTE

1. All parameters NOT specially mentioned are measured at 230VAC input, rated load and 25°C of ambient temperature.
2. Ripple & noise are measured at 20MHz of bandwidth by using a 12" twisted pair-wire terminated with a 0.1 μ & 47 μ parallel capacitor.
3. Tolerance: includes set up tolerance, line regulation and load regulation

■ Outline and Dimension:



Terminal Pin No. Assignment:

Pin No.	Assignment	Pin No.	Assignment
3	FG \ominus	4	DC OUTPUT -V
1, 2	AC INPUT	5	DC OUTPUT +V

■ Derating Curve

