

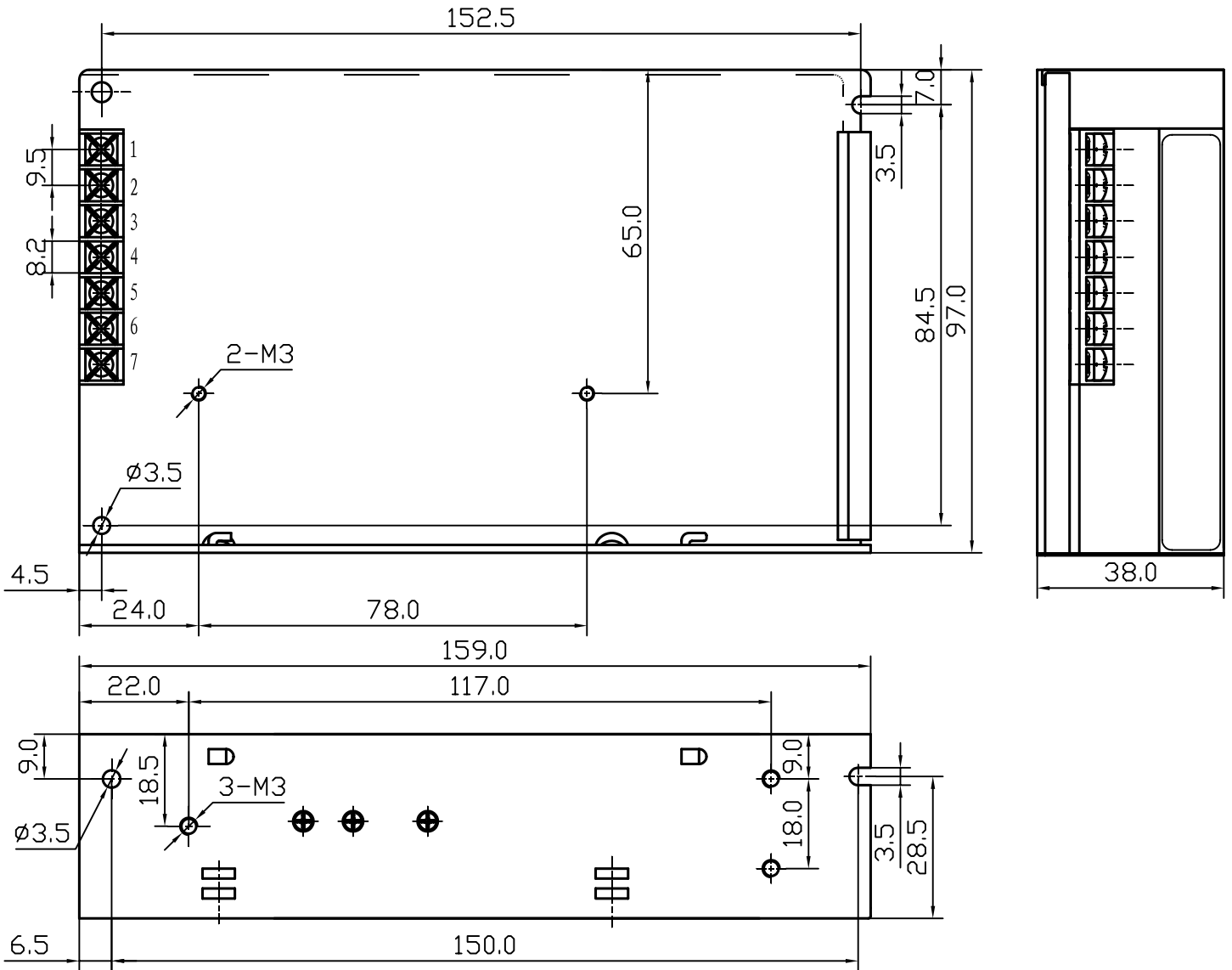
## Features:

- High efficiency, high reliability
- Universal AC input /full range
- 100% full load burn-in test
- Protections: Short circuit/ Over load/ Over voltage
- LED indicator for power on
- Cooling by free air convection
- Fixed switching frequency at 54KHz
- 2 years warranty
- Dimensions: 159\*97\*38mm(L\*W\*H)



MODEL		SKD-60A		SKD-60B	
		CH1	CH2	CH1	CH2
OUTPUT	DC VOLTAGE	5V	12V	5V	24V
	VOLTAGE TOLERANCE	±2%	±6%	±2%	±5%
	RATED CURRENT	4A	3A	3A	1.8A
	CURRENT RANGE	0.3-6A	0.2-4A	0.3-6A	0.2-2.2A
	RATED POWER	56W		58W	
	RIPPLE & NOISE	75mVp-p	150mVp-p	75mVp-p	150mVp-p
	DC ADJUSTMENT RANGE	CH1: -5%, +10%		CH1: -5%, +10%	
	SETUP, RISE, HOLD TIME	300ms,50ms ,80ms/230VAC    800ms,50ms,10ms/115VAC at full load			
INPUT	VOLTAGE RANGE	85~264 VAC/ 47~63 Hz;    120~370VDC			
	AC CURRENT	2A/115 V    1A/ 230 V			
	EFFICIENCY	73%		76%	
	INRUSH CURRENT	Cold start 30A/115VAC    60A/230VAC			
	LEAKAGE CURRENT	<3.5mA/240VAC			
PROTECTION	OVER LOAD	105%~150%			
		Protection type: Shut down o/p voltage, recovers automatically after fault condition is removed			
	OVER VOLTAGE	115%~135%			
		Protection type: hiccup mode, recovers automatically after fault condition is removed.			
ENVIRONMENT	WORKING TEMP., HUMIDITY	-10℃~+60℃; 20%~90 %RH			
	STORAGE TEMP., HUMIDITY	-20℃~+85℃; 10%~95 %RH			
	VIBRATION	10~500Hz, 2G 10min./1cycle, period for 60min, each along X, Y, Z axes			
SAFETY	WITHSTAND VOLTAGE	I/P-O/P: 3KVAC    I/P-FG: 1.5KVAC    O/P-FG: 0.5KVAC			
	ISOLATION RESISTANCE	I/P-O/P, I/P-FG, O/P-FG: 100M Ohms/500VDC			
STANDARD	SAFETY STANDARD	Design refer to UL1012 , UL60950 ,EN60950			
	EMC STANDARD	Design refer to EN55022(CLSPR22),EN61000-3-2,-3, EN61000-4-2,3,4,5,6,8,11; ENV50204, EN55024			
OTHERS	WEIGHT	0.54Kg			
	PACKING	24pcs/13.8Kg/0.75CUFT			
NOTE	<ol style="list-style-type: none"> <li>All parameters NOT specially mentioned are measured at 230VAC input, rated load and 25℃ of ambient temperature.</li> <li>Ripple &amp; noise are measured at 20MHz of bandwidth by using a 12" twisted pair-wire terminated with a 0.1 μ &amp; 47 μ parallel capacitor.</li> <li>Tolerance: includes set up tolerance, line regulation and load regulation.</li> <li>The power supply is considered a component which will be installed into a final equipment. The final equipment must be re-confirmed that it still meets EMC directives.</li> </ol>				

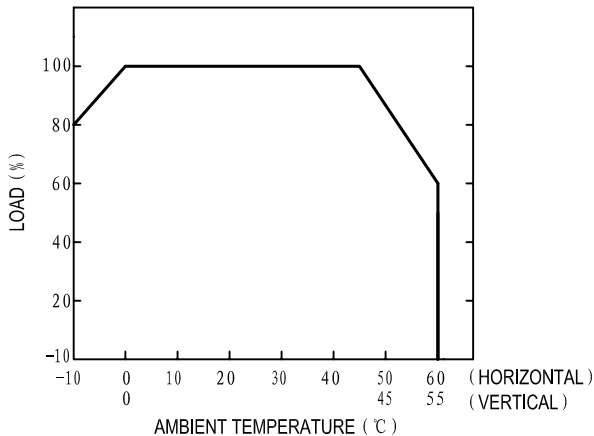
■ Outline and Dimension:



Terminal Pin No. Assignment:

Pin No.	Assignment	Pin No.	Assignment
1	AC/L	4	DC OUTPUT +V2
2	AC/N	5	DC OUTPUT +V1
3	FG ⊕	6, 7	DC OUTPUT COM

■ Derating Curve



■ Static Characteristics (B)

