

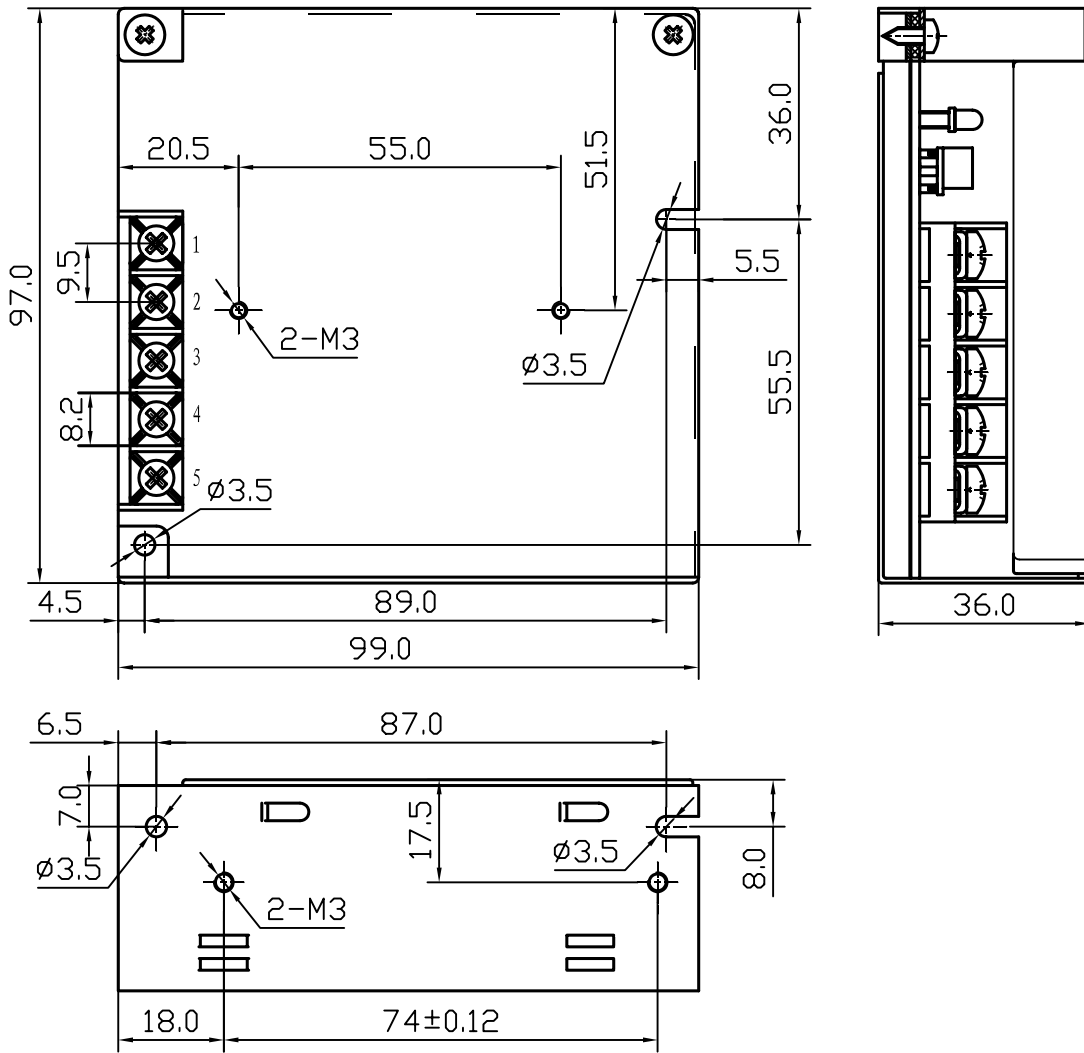
Features:

- High efficiency, high reliability, lost cost
- AC input range selected by switch
- 100% full load burn-in test
- Protections: Short circuit / Over load
- Cooling by free air convection
- Fixed switching frequency at 37KHz
- 1 year warranty
- Dimensions: 99*97*36mm(L*W*H)



MODEL		SKS-15-5	SKS-15-12	SKS-15-24
OUTPUT	DC VOLTAGE	5V	12V	24V
	VOLTAGE TOLERANCE	±2%	±1%	±1%
	RATED CURRENT	3A	1.3A	0.7A
	CURRENT RANGE	0-3A	0-1.3A	0-0.7A
	RATED POWER	15W	15.6W	16.8W
	RIPPLE & NOISE	50mVp-p	50mVp-p	100mVp-p
	DC ADJUSTMENT RANGE	-5%,+10%	±10%	±10%
	SETUP, RISE, HOLD TIME	200ms,100ms,30ms at full load		
INPUT	VOLTAGE RANGE	85~132 VAC / 170~264 VAC 47~63 Hz; selected by switch 240~370VDC		
	AC CURRENT	0.5 A/115 V 0.25A/ 230 V		
	EFFICIENCY	65%	68%	72%
	INRUSH CURRENT	Cold start 15A/115VAC 30A/230VAC		
	LEAKAGE CURRENT	<0.5 mA/240VAC		
PROTECTION	OVER LOAD	110%~160%		
		Protection type: Shut down o/p voltage, recovers automatically after fault condition is removed		
ENVIRONMENT	WORKING TEMP., HUMIDITY	-10℃~+60℃; 20%~90 %RH		
	STORAGE TEMP., HUMIDITY	-20℃~+85℃; 10%~95 %RH		
	VIBRATION	10~500Hz, 2G 10min./1cycl, period for 60 min, each along X, Y, Z, axes		
SAFETY	WITHSTAND VOLTAGE	I/P-O/P: 1.5KVAC I/P-FG: 1.5KVAC O/P-FG: 0.5KVAC		
	ISOLATION RESISTANCE	I/P-O/P, I/P-FG, O/P-FG: 100M Ohms/500VDC		
STANDARD	SAFETY STANDARD	Design refer to UL1012		
	EMC STANDARD	Design refer to FCC Part15 J Conduction Class B		
OTHERS	WEIGHT	0.31Kg		
	PACKING	45pcs/15Kg/0.9CUFT		
NOTE	<ol style="list-style-type: none"> All parameters NOT specially mentioned are measured at 230VAC input, rated load and 25℃ of ambient temperature. Ripple & noise are measured at 20MHz of bandwidth by using a 12" twisted pair-wire terminated with a 0.1 μ & 47 μ parallel capacitor. Tolerance: includes set up tolerance, line regulation and load regulation 			

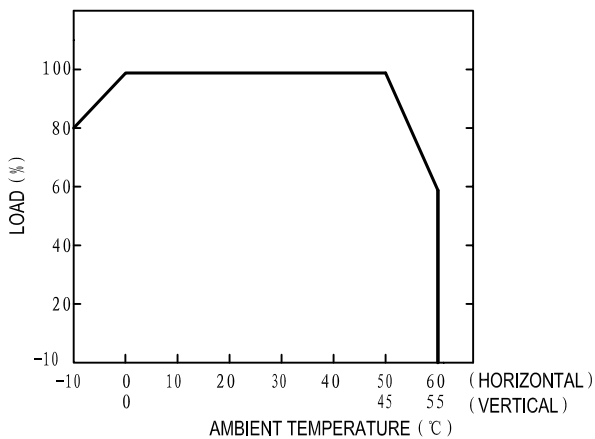
■ Outline and Dimension:



Terminal Pin No. Assignment:

Pin No.	Assignment	Pin No.	Assignment
1	DC OUTPUT +V	3	FG ⊕
2	DC OUTPUT -V	4, 5	AC INPUT

■ Derating Curve



■ Static Characteristics (24V)

